

DigiTool[®]

Digital Data acquisition

- Data Collection
- High Level of Security
- Guard Control Management Software System



ROSSLARE
SECURITY PRODUCTS
Experience the Difference



Sound, visual, and vibration for success read indication

Rugged and waterproof

Storage capacity of 8000 time-stamped readings



Simple operation with Lithium-ion rechargeable battery, which can provide over 300,000 reads or up to 6 months of use

Water and dust resistant design

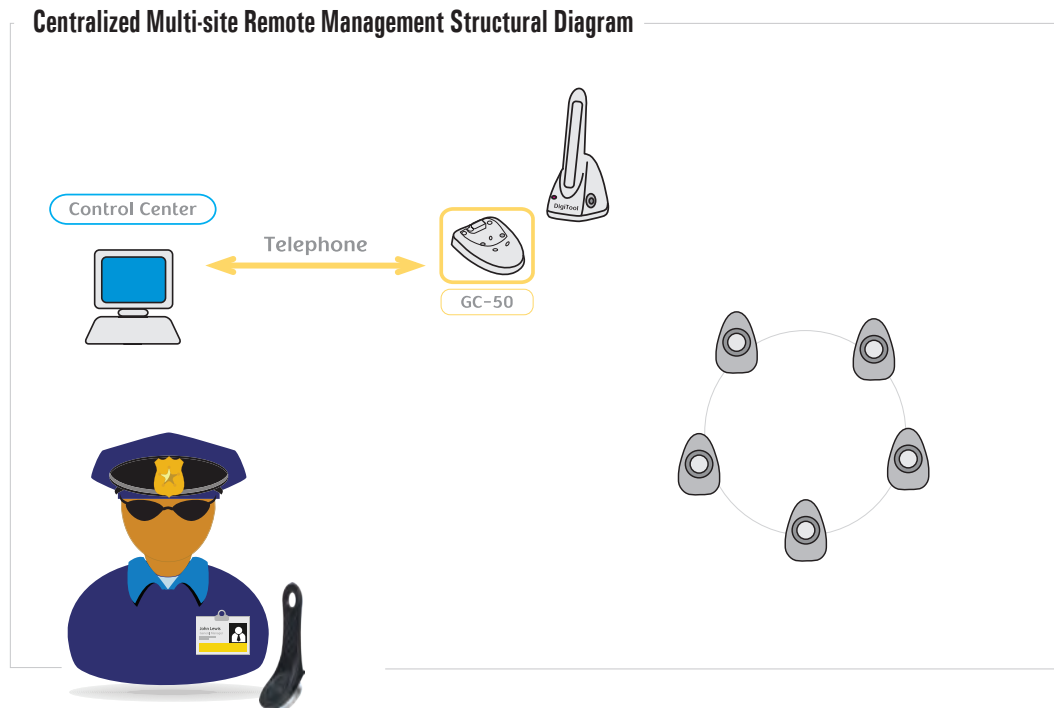
GC-01
Data Acquisition Reader

GUARD PATROL SYSTEM

THE DIGITOOL® GUARD PATROL SYSTEM ENCOMPASSES A COMPLETE RANGE OF PROFESSIONAL, HIGH-QUALITY, HIGH-PERFORMANCE PRODUCTS FOR PRIVATE AND PUBLIC SECTORS, AND IS DESIGNED FOR YOUR PATROL AND DATA ACQUISITION APPLICATIONS.

Rosslare's DigiTool® is a state-of-the-art yet easy to use patrol system. Our patrol system will improve your security level and give you peace of mind. You can monitor the security staff workers from afar while keeping them alert and on the move. A combination of setting new routes and different time frames will confuse and deter possible intruders. You can easily choose a distinct route for each security person. Each product is aesthetically designed to add an air of modernity and sophistication. The reader is designed to be extra resistant to hits and falls, so it is extremely difficult to damage the reader or the data in it.

HOW DOES DigiTool® WORK?



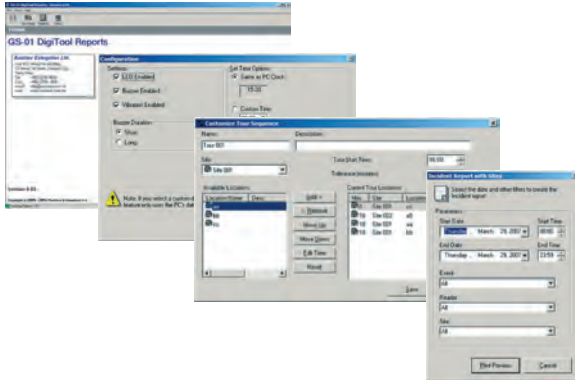
The discrete tags blend in easily on different backgrounds. After placing the tags in the designated areas, a sequence must be determined. Each sequence represents a route that the patrol unit follows. Upon reaching the tag, the worker connects the reader to the tag. The reader produces a vibrating sound to indicate that the data was read properly, and the tag information and time are immediately saved to the reader.

The base stations are designed to fit particular needs. There is a charger for less secured areas and a charger/data acquisition base station to both charge the reader and to download its stored data. Once the reader is placed in the data acquisition station, the data begins to be transferred to a connected computer.

We added a special feature with our remote storage communicator, the GC-50. When a reader is inserted in the GC-50, the data is downloaded to the communicator without the need for a computer connection, which enables the patrol unit to venture for long distances. The data can then be downloaded later by connecting a computer.

Sometimes an event needs to be recorded. Rosslare's highly intuitive solution includes the Event Wallets. Each contains numerous tags, which when 'read' in a proper sequence produces an event log. Events may include: water leaks, alarming noises, and so on.

Guard Control Management Software

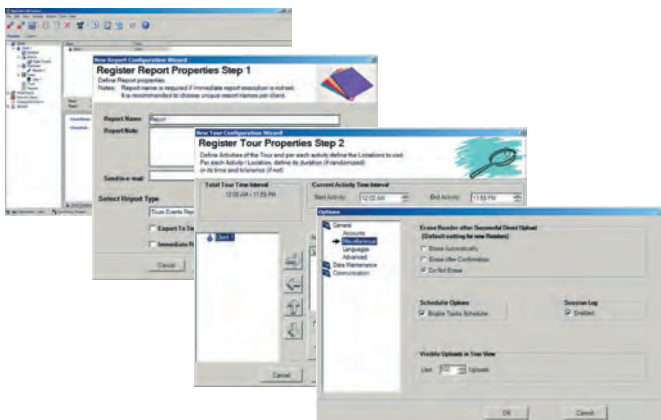


Rosslare's GS-01 DigiTool® Reports Lite is an advanced software suite that provides advanced features to enable the PC to act as a central data station. The GS-01 software is designed to set up guard patrol sites (locations, event books, and tour routes), manage the data acquired during the patrols, and generate reports from the data.

During the patrol (tour), staff members collect location IDs and specific status events by placing their readers (GC-01) on location tags (GA-01) or event wallets (GA-02, GA-12).

The collected information is then transferred to the GS-01 software management system by placing the reader in the docking base (GC-02) and then activating the data download.

Several kinds of reports can then be generated from the data collected during the patrols and downloaded to the PC.



Rosslare's GS-02 is designed to seamlessly manage the DigiTool® Guard Patrol system. It enables key staff duties to be monitored and data captured for performance reporting. During the patrol (tour), staff members collect location IDs and specific status events by placing their readers (GC-01) on location tags (GA-01) or event wallets (GA-02, GA-12).

The collected information is then transferred to the GS-02 DCC (DigiTool® Call Center) management system by placing the reader in the docking base (GC-02) and then activating the data upload.

Unlike paper-based duty tracking systems, information within the GS-02 DCC management system is centrally accessible, and information can be manipulated quickly and easily for improved management decisions.

WHY DigiTool® ?

- **Data Collection** – Collects data of completed security personnel patrols
- **Reporting** – Various reporting options: patrols, events, exceptions, and more
- **High Level of Security** – Marks and identifies locations and assets that require guard surveillance
- **Networked Versatile System** – Manages multiple sites and guards
- **Improve Service Quality** – Supervise your guards' performance and take immediate actions when necessary
- **Guard Control Management Software** – Guard patrol monitoring and full management of clients, locations, events, hardware, guards, tours, and reports
- **Multiple Remote Station** – Uses RS-232, PSTN connectivity via Rosslare's MD-N32 units
- **Battery Life** – GC-01 long battery life up to 6 months or 300,000 readings

SYSTEM COMPONENTS

GA-01
Location
Tag



GA-06
Leather
Holster



AT-32B
Key Tag



GA-02
Event
Wallet



GA-12
Numeric
Wallet



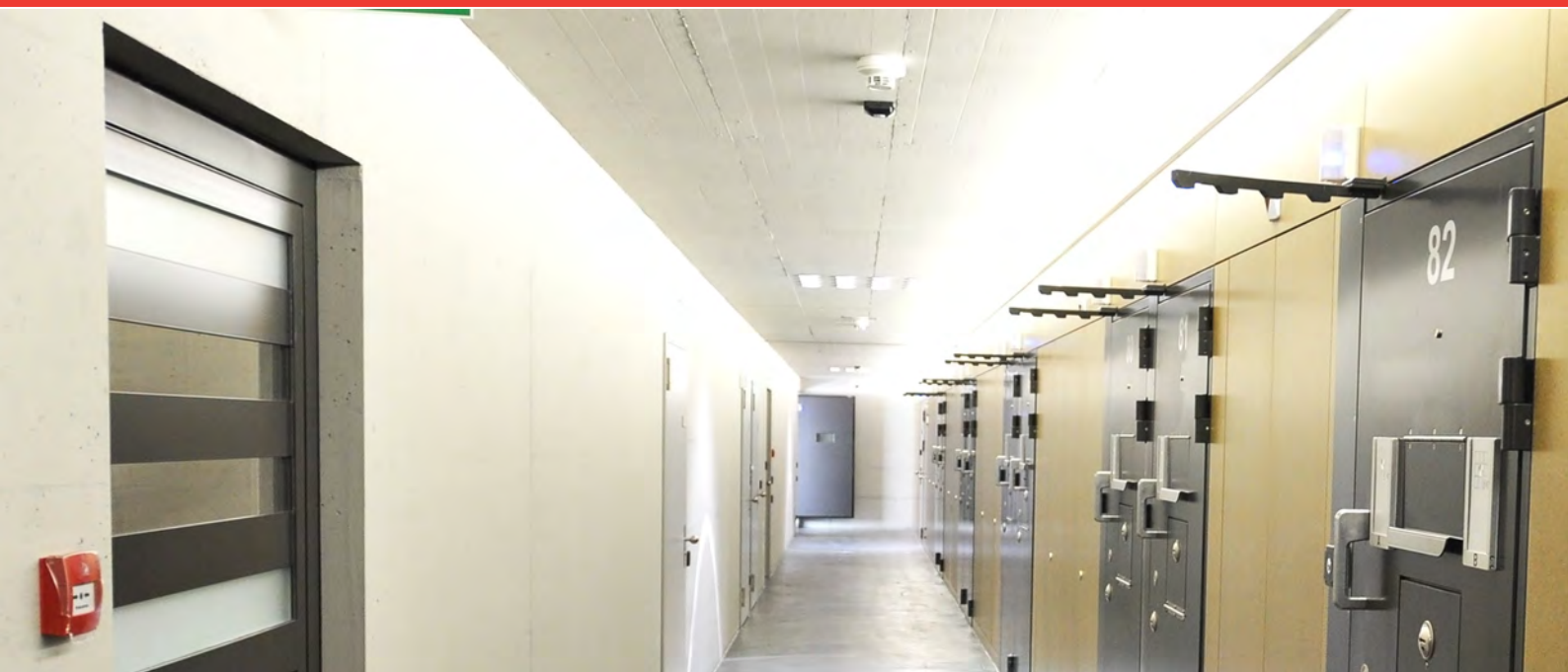
GC-01
Data
Acquisition
Reader



GC-02/3
Charger
Base



GC 50
Remote
Storage/
Communicator



SPECIFICATIONS

	GC-01	GC-02/GC-03	GC-50
Operating Voltage Range	3.0–3.6 VDC	9–12 VDC	
Standby Input Current	6 μ A	0.1 mA	30 mA
Maximum Input Current	21 μ A	500 mA	150 mA
Operating Temp. Range	-31°C to 63°C (-25°F to 145°F)	-20°C to 60°C (-4°F to 140°F)	
Operating Humidity	0 to 95% (non-condensing)		
Dimensions (H x W x D)	175 (H) x 33 (Dia) mm (6.89 x 1.3 in.)	100 x 82 x 80 mm (3.94 x 3.23 x 3.15 in.)	150 x 120 x 30 mm (5.90 x 4.72 x 1.18 in.)
Weight	225 g (0.50 lb)	200 g (0.44 lb)	230 g (0.51 lb)

ABOUT ROSSLARE SECURITY

Rosslare Security Products, a division of Rosslare Enterprises Ltd., has been manufacturing high-quality security products since 1980. The company's three main lines – Access Control, Intrusion Detection and Guard Patrol – together with a growing product range have transformed Rosslare Security into a major worldwide force in security. Rosslare holds itself to the highest standards of customer service and manufacturing (ISO 9001:2008, ISO 14001:2004). The company complies with the EU Directive 2002/95/EC on Restriction of Hazardous Substances (RoHS).



For more information, please contact your local Rosslare office

North America Sales & Support: info.na@rosslaresecurity.com

Europe Sales & Support: info.eu@rosslaresecurity.com

APAC, Middle East & Africa: info.apacme@rosslaresecurity.com

China: info.cn@rosslaresecurity.com

India: info.in@rosslaresecurity.com

Latin America & Caribbean: info.la@rosslaresecurity.com

5505-0230301-00

ROSSLARE
SECURITY PRODUCTS